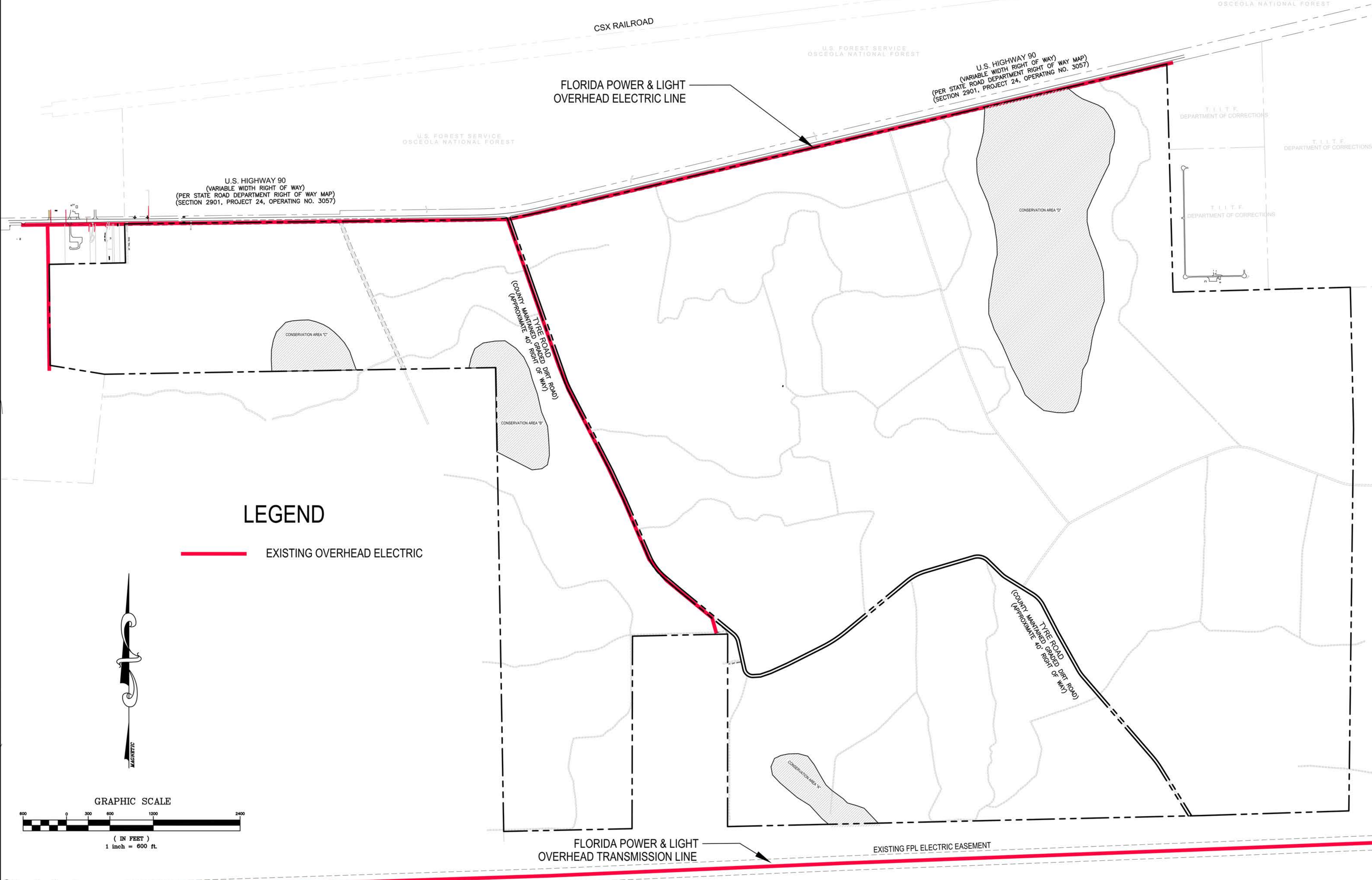
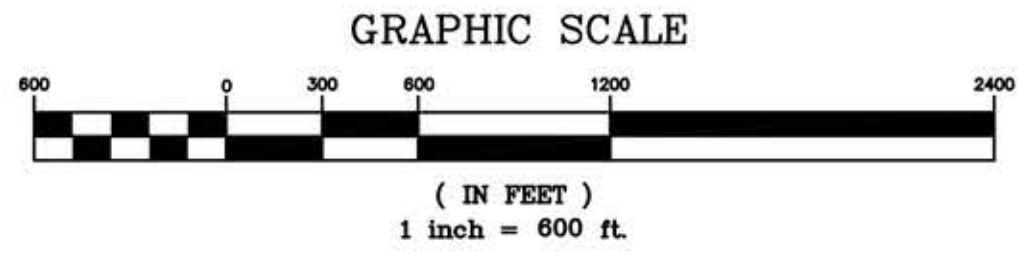


ATTACHMENT 26-B - ELECTRIC SERVICE:
A MAP SHOWING THE LOCATION AND VOLTAGE OF THE
NEAREST ELECTRIC INFRASTRUCTURE SERVING THE
INDUSTRIAL PARK



LEGEND

— EXISTING OVERHEAD ELECTRIC



Moore Bass
 CONSULTING
 TALLAHASSEE
 DESTIN
 ATLANTA
 (770) 914-9394 (Office)
 (770) 914-9588 (Fax)
 www.moorebass.com

PROJECT NAME	NORTH FLORIDA INTERMODAL PARK COLUMBIA COUNTY, FLORIDA
CLIENT NAME	PLUM CREEK P.O. BOX 357700 GAINESVILLE, FL 32635-7700

REVISIONS	

MB

UTILITY EXHIBIT.dwg	
ARCHIVE	
DATE	8/6/12
FILE #	
CONTRACT #	
DRAWN BY	SDM

The Drawings, Specifications and other documents prepared by Moore Bass Consulting, Inc. (MBC) for this Project are instruments of MB for use solely with respect to this Project and, unless otherwise provided, MB shall be deemed the author of these documents and shall retain all common law, statutory and other reserved rights, including the copyright.

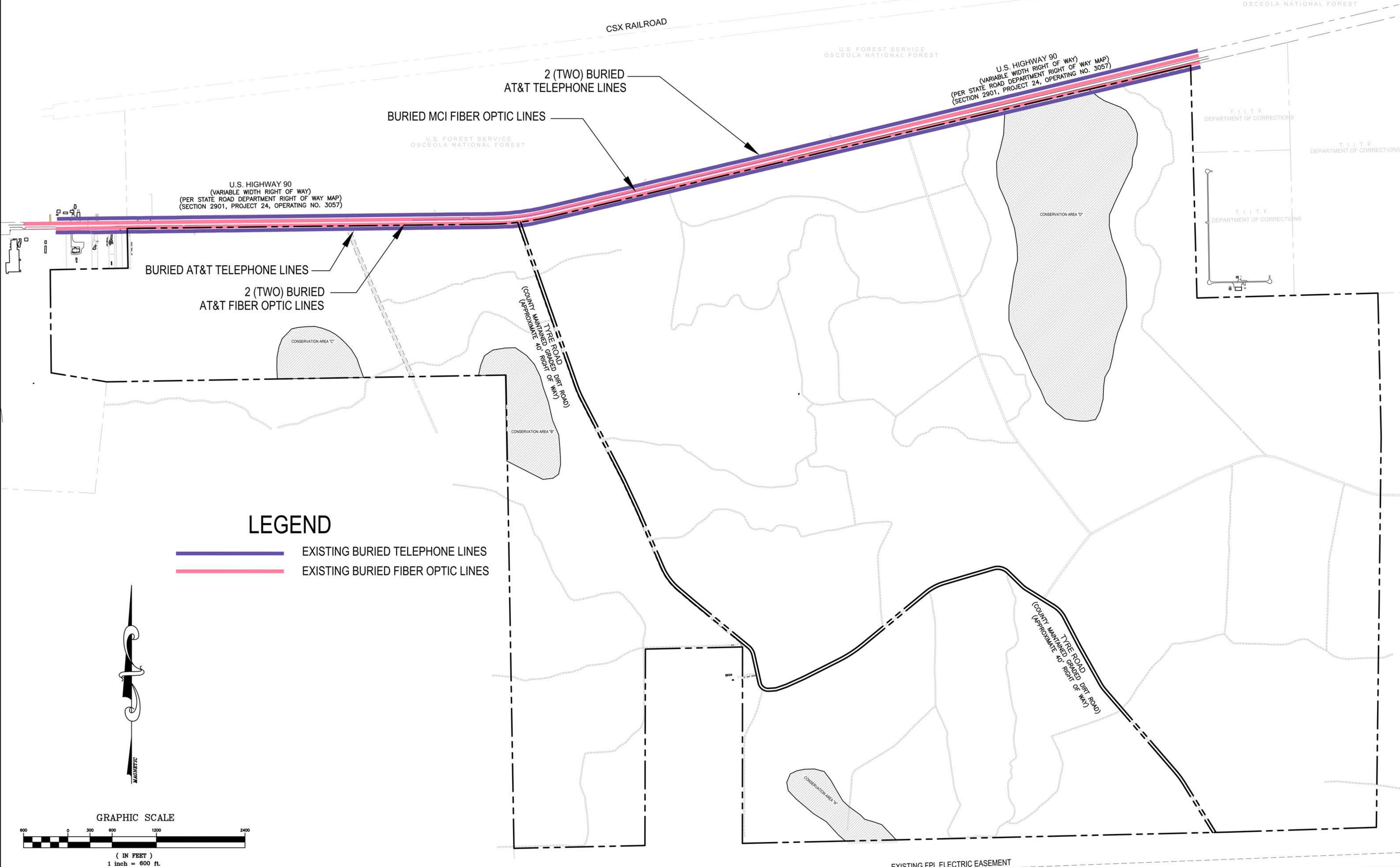
SEAL

SHEET TITLE
 UTILITY MAP -
 ELECTRIC SERVICE

SHEET
26-B

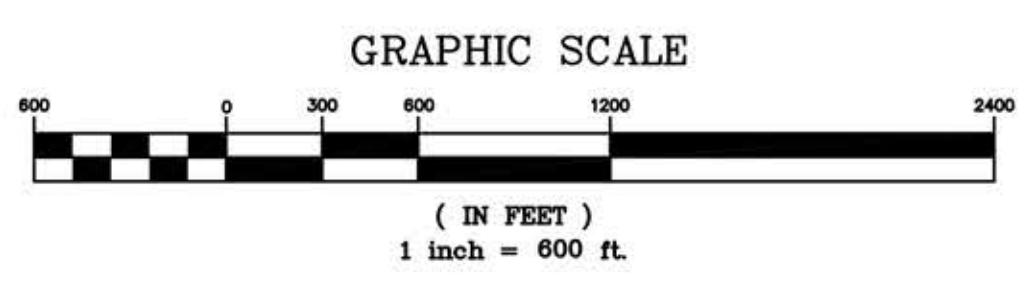
G:\projects\Columbia County\McClain Swensen\UTILITY EXHIBIT.dwg, 26-B, smore, Aug 08, 2012, 2:19:40pm

**ATTACHMENT 30B - TELECOMMUNICATION SERVICE:
A MAP SHOWING THE LOCATION OF THE NEAREST
TELECOMMUNICATION INFRASTRUCTURE SERVING THE
INDUSTRIAL PARK**



LEGEND

- EXISTING BURIED TELEPHONE LINES
- EXISTING BURIED FIBER OPTIC LINES



Moore Bass
CONSULTING
TALLAHASSEE
DESTIN
ATLANTA
(770) 914-9394 (Office)
(770) 914-9588 (Fax)
www.moorebass.com

PROJECT NAME	NORTH FLORIDA INTERMODAL PARK COLUMBIA COUNTY, FLORIDA
CLIENT NAME	PLUM CREEK P.O. BOX 357700 GAINESVILLE, FL 32635-7700

REVISIONS	



UTILITY EXHIBIT.dwg	
ARCHIVE	
DATE	8/6/12
FILE #	
CONTRACT #	
DRAWN BY	SDM

The Drawings, Specifications and other documents prepared by Moore Bass Consulting, Inc. (MBC) for this Project are instruments of MB for use solely with respect to this Project and, unless otherwise provided, MB shall be deemed the author of these documents and shall retain all common law, statutory and other reserved rights, including the copyright.

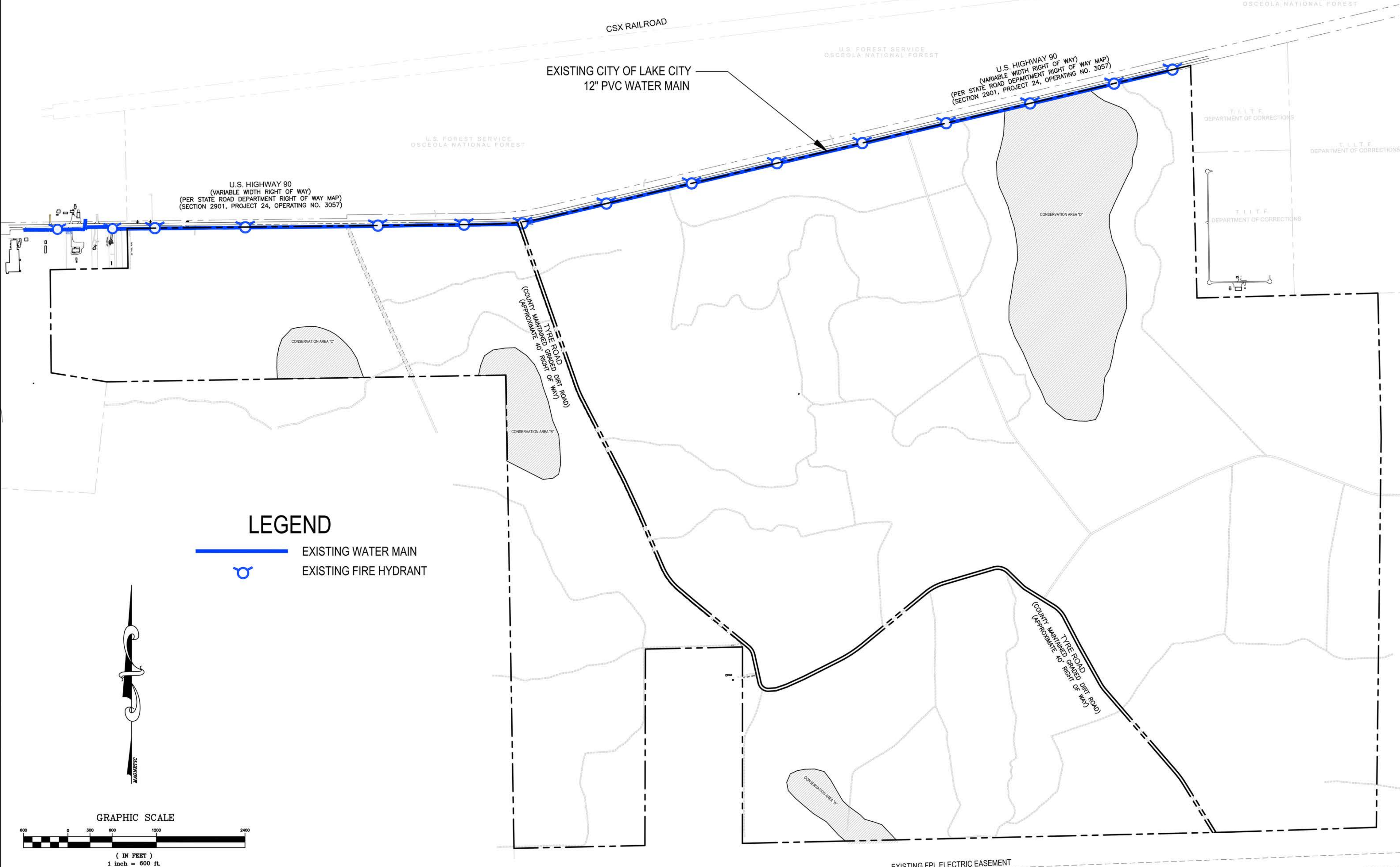
SEAL

SHEET TITLE
**UTILITY MAP -
TELECOMMUNICATION
SERVICE**

SHEET
30-B

G:\projects\Columbia County\McClain Sweeney\UTILITY EXHIBIT.dwg, 30-B, smoores, Aug 08, 2012, 2:19:21pm

ATTACHMENT 28B - WATER SERVICE:
A MAP SHOWING THE LOCATION AND SIZE OF THE
NEAREST WATER LINE(S) SERVING THE INDUSTRIAL
PARK

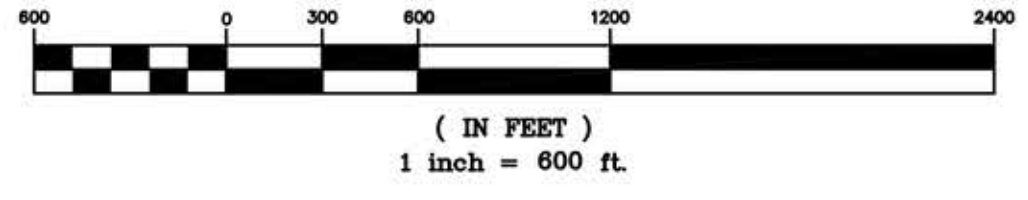


LEGEND

- EXISTING WATER MAIN
- EXISTING FIRE HYDRANT



GRAPHIC SCALE



Moore Bass
 CONSULTING
 TALLAHASSEE
 DESTIN
 ATLANTA
 (770) 914-9394 (Office)
 (770) 914-9588 (Fax)
 www.moorebass.com

PROJECT NAME NORTH FLORIDA INTERMODAL PARK COLUMBIA COUNTY, FLORIDA	CLIENT NAME PLUM CREEK P.O. BOX 357700 GAINESVILLE, FL 32635-7700
--	---

REVISIONS	



UTILITY EXHIBIT.dwg
ARCHIVE
DATE 8/6/12
FILE #
CONTRACT #
DRAWN BY SDM

The Drawings, Specifications and other documents prepared by Moore Bass Consulting, Inc. (MB) for this Project are instruments of MB for use solely with respect to this Project and, unless otherwise provided, MB shall be deemed the author of these documents and shall retain all common law, statutory and other reserved rights, including the copyright.

SEAL

SHEET TITLE
 UTILITY MAP -
 WATER SERVICE

SHEET
28-B

G:\projects\Columbia County\McClain Sweeney\UTILITY EXHIBIT.dwg, 28-B, smore, Aug 08, 2012, 2:20:19pm

