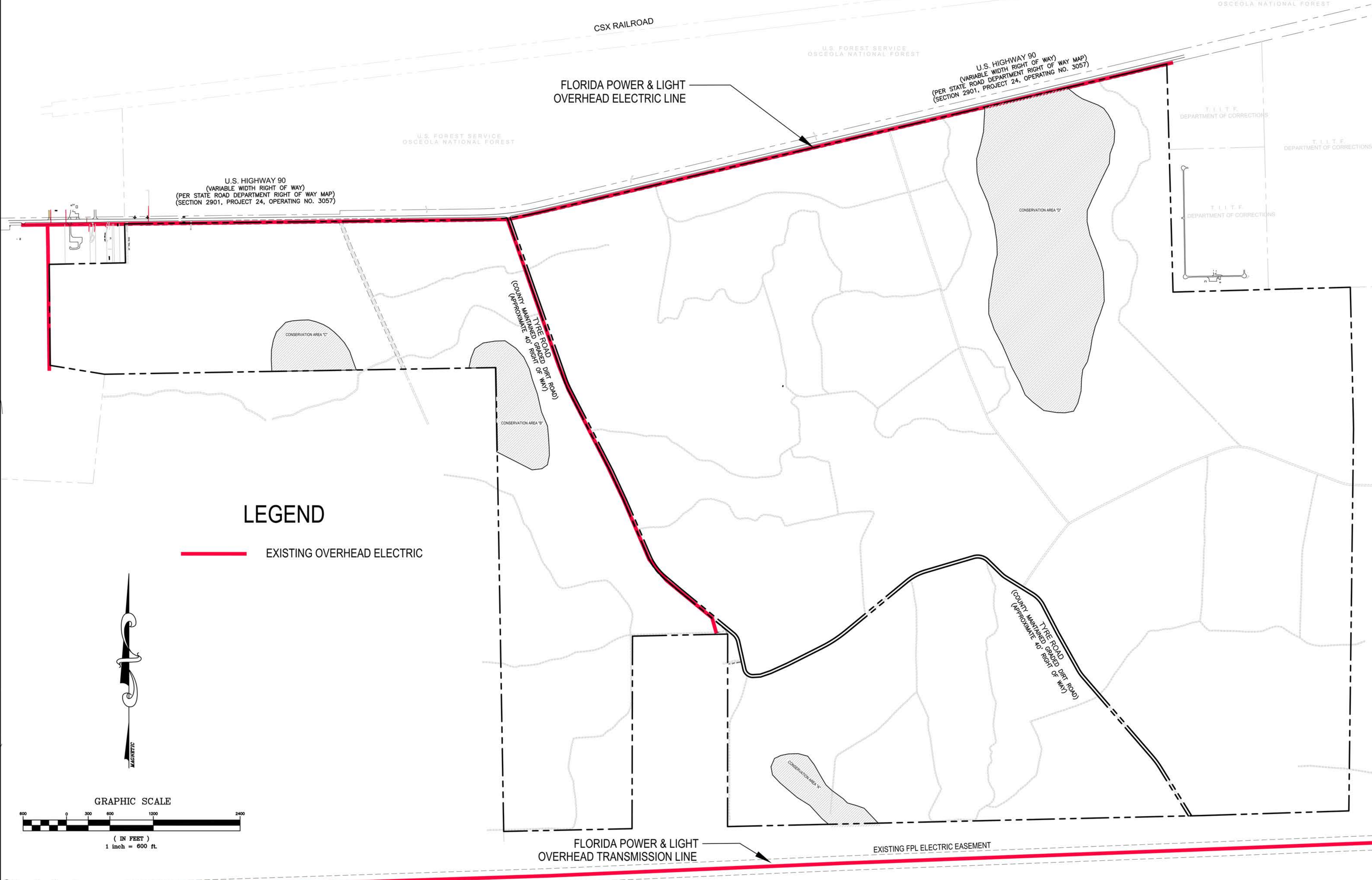
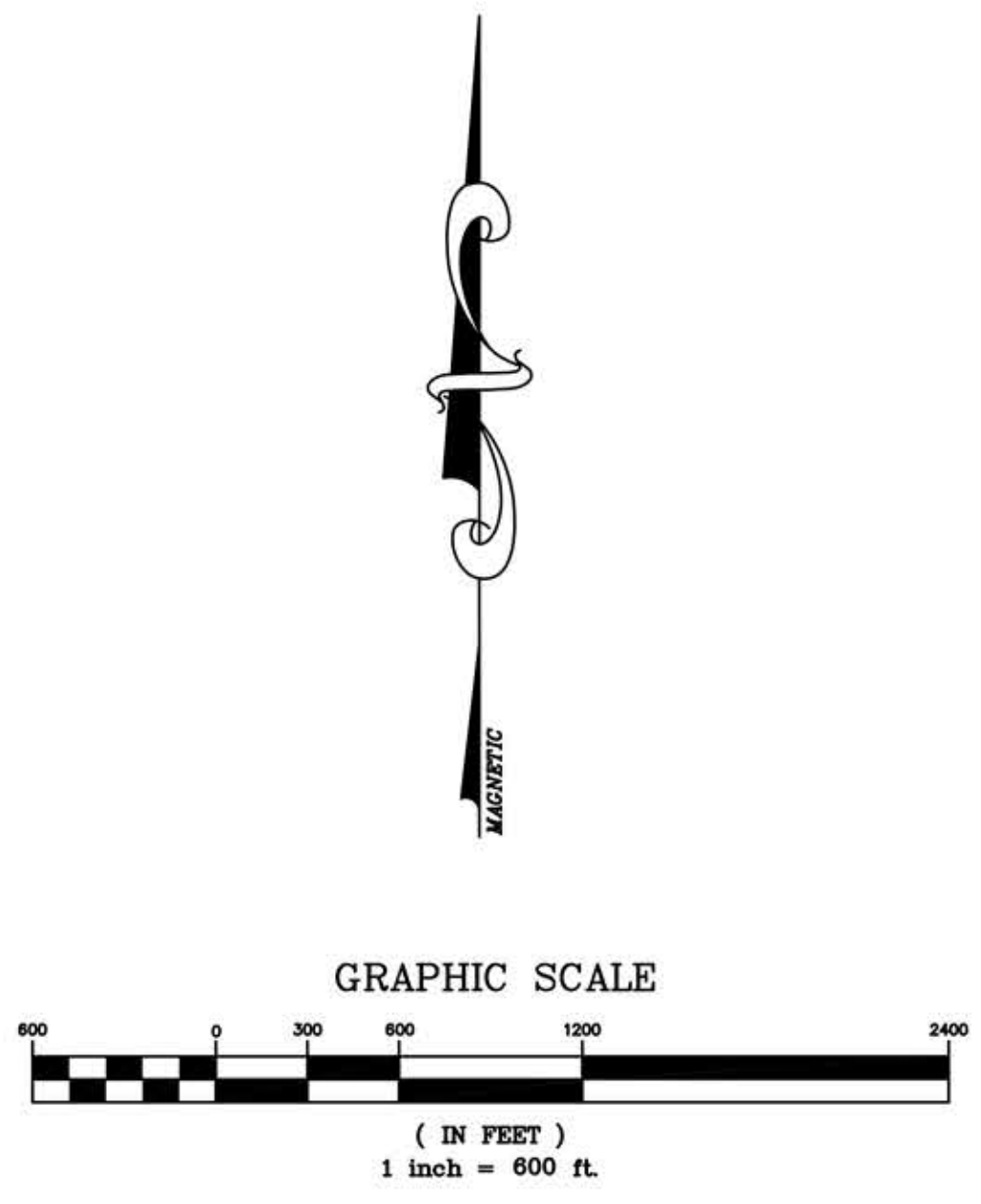


ATTACHMENT 26-B - ELECTRIC SERVICE:
A MAP SHOWING THE LOCATION AND VOLTAGE OF THE
NEAREST ELECTRIC INFRASTRUCTURE SERVING THE
INDUSTRIAL PARK



LEGEND

— EXISTING OVERHEAD ELECTRIC



Moore Bass
 CONSULTING
 TALLAHASSEE
 DESTIN
 ATLANTA
 (770) 914-9394 (Office)
 (770) 914-9586 (Fax)
 www.moorebass.com

PROJECT NAME	NORTH FLORIDA INTERMODAL PARK COLUMBIA COUNTY, FLORIDA
CLIENT NAME	PLUM CREEK P.O. BOX 357700 GAINESVILLE, FL 32635-7700

REVISIONS	



UTILITY EXHIBIT.dwg	
ARCHIVE	
DATE	8/6/12
FILE #	
CONTRACT #	
DRAWN BY	SDM

The Drawings, Specifications and other documents prepared by Moore Bass Consulting, Inc. (MBC) for this Project are instruments of MB for use solely with respect to this Project and, unless otherwise provided, MB shall be deemed the author of these documents and shall retain all common law, statutory and other reserved rights, including the copyright.

SEAL

SHEET TITLE
 UTILITY MAP -
 ELECTRIC SERVICE

SHEET
26-B

G:\projects\Columbia County\McClain Swensen\UTILITY EXHIBIT.dwg, 26-B, smore, Aug 08, 2012, 2:19:40pm